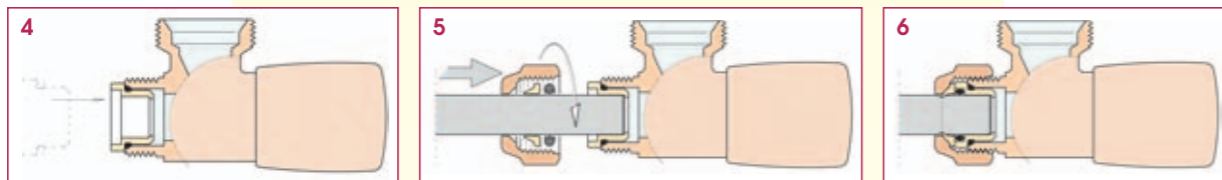
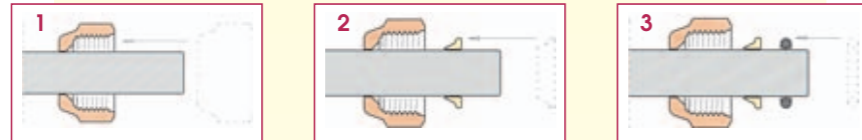
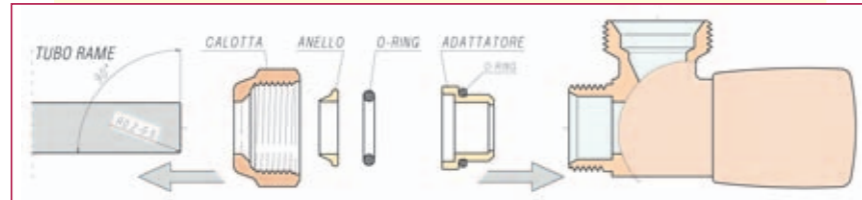
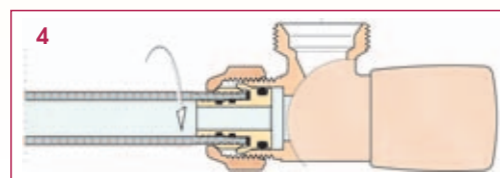
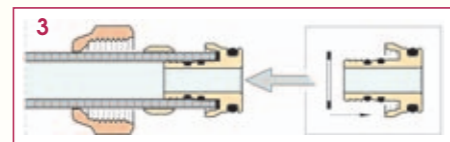
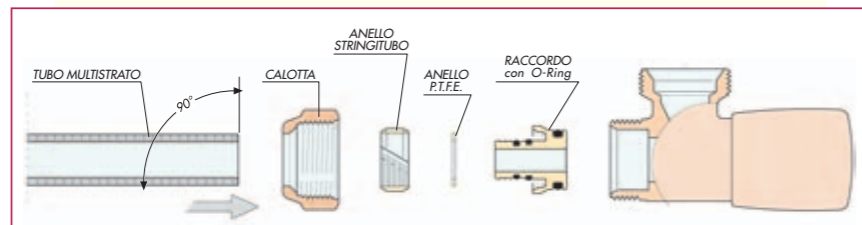


RACCORDO PER TUBO RAME A TENUTA O-RING Istruzioni di montaggio
O-RING CONNECTION FOR COPPER TUBE Installation instructions



RACCORDO PER TUBO PLASTICO/MULTISTRATO Istruzioni di montaggio
CONNECTION FOR PLASTIC/MULTISTRATE TUBE Installation instructions



RACCORDI
 CONNECTIONS



EDIZIONE - EDITION - 1.2



RACCORDI PER SERIE ELITE/PRESTIGE/MINIMAL e LIBERTY
ELITE/PRESTIGE/MINIMAL and LIBERTY CONNECTIONS



0380-

0381-

0382-

0383-

0383-

	G	F	T1	T2	A	CH
24x19	18	9,5-10	14	18	28	
24x19	18	11,5-12	16	18	28	
24x19	18	11,5-12	17	18	28	
24x19	18	13,5-14	18	18	28	
24x19	18	15,5-16	20	18	28	

0280- 0380- 0480-

Raccordo per tubo rame a tenuta P.T.F.E.
Copper tube connection with P.T.F.E. seal.

0281- 0381- 0481-

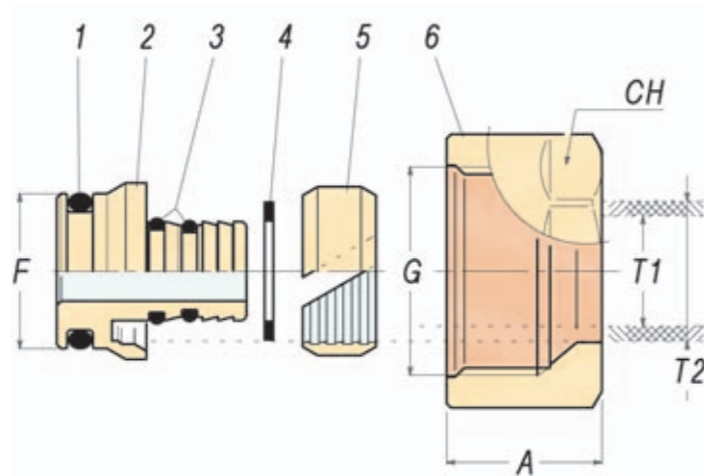
Raccordo per tubo rame a tenuta O-Ring.
Copper tube connection with O-Ring seal.

0282- 0382- 0482-

Raccordo per tubo polietilene.
Polyethylene tube connection.

0283- 0383- 0483-

Raccordo per tubo multistrato.
Multistrata tube connection.



RACCORDI PER SERIE OVUS/ESEDRA/TONDERA e PLANET
OVUS/ESEDRA/TONDERA and PLANET CONNECTIONS



0480-

0481-

0482-

0483-

RACCORDI PER SERIE ITALIA/EXPORT e COLLETTORI
ITALIA/EXPORT and MANIFOLDS CONNECTIONS



0280-

0281-

0282-

0283-

0280-0480-	G	F	T	A	CH
1/2"	16	10	15	24	
1/2"	16	12	15	24	
1/2"	16	14	15	24	
1/2"	16	15	15	24	
1/2"	16	16	15	24	
24x19	18	10	17	27	
24x19	18	12	17	27	
24x19	18	14	17	27	
24x19	18	15	17	27	
24x19	18	16	17	27	
24x19	18	18	17	27	

0281-0481-	G	F	T	A	CH
1/2"	16	10	15	24	
1/2"	16	12	15	24	
1/2"	16	14	15	24	
24x19	18	10	17	27	
24x19	18	12	17	27	
24x19	18	14	17	27	
24x19	18	15	17	27	
24x19	18	16	17	27	

0282-0482-	G	F	T1	T2	A	CH
24x19	18	8	12	17	27	
24x19	18	10	12	17	27	
24x19	18	10	15	17	27	
24x19	18	12	16	17	27	
24x19	18	13	16	17	27	
24x19	18	13	17	17	27	
24x19	18	13	18	17	27	
24x19	18	14	18	17	27	
24x19	18	16	20	17	27	

0380-	G	F	T	A	CH
24x19	18	10	18	28	
24x19	18	12	18	28	
24x19	18	14	18	28	
24x19	18	15	18	28	
24x19	18	16	18	28	
24x19	18	18	18	28	

0381-	G	F	T	A	CH
24x19	18	10	18	28	
24x19	18	12	18	28	
24x19	18	14	18	28	
24x19	18	15	18	28	
24x19	18	16	18	28	

0382-	G	F	T1	T2	A	CH
24x19	18	8	12	18	28	
24x19	18	10	12	18	28	
24x19	18	10	15	18	28	
24x19	18	12	16	18	28	
24x19	18	13	16	18	28	
24x19	18	13	17	18	28	
24x19	18	13	18	18	28	
24x19	18	14	18	18	28	
24x19	18	16	20	18	28	

- 1 - UNI EN 12164 - CW614N
- UNI EN 12165 - CW617N
- 2 - P.T.F.E.
- 3 - UNI EN 12164 - CW614N
- 4 - Mescola EP
- 5 - Mescola EP
- 6 - UNI EN 12164 - CW614N

0283-0483-	G	F	T1	T2	A	CH
1/2"	16	9,5-10	14	15	24	
1/2"	16	11,5-12	16	15	24	
24x19	18	9,5-10	14	17	27	
24x19	18	11,5-12	16	17	27	
24x19	18	11,5-12	17	17	27	
24x19	18	13,5-14	18	17	27	
24x19	18	15,5-16	20	17	27	